

Selling Points Of J Series 5-12t Internal Combustion Counterbalanced Forklift Trucks



J Series 5-8T



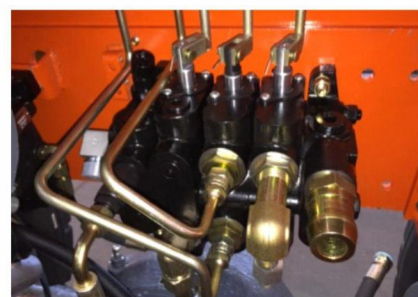
J Series 10T

No.1 Good performance

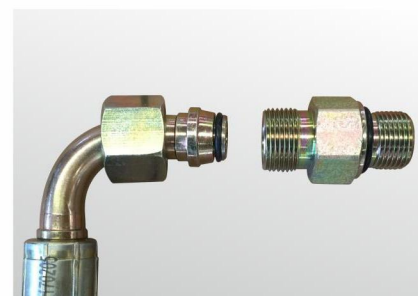
- Electro-hydraulic reversing gearbox, easy for operation; CPCD120 with multi-plate clutch, stable performance



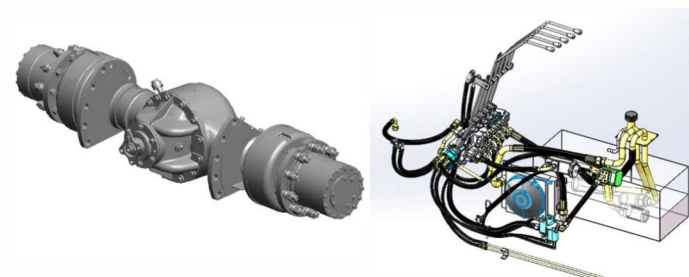
- Low-loss multi way valve application, lifting system efficiency increasing by 10%, oil temperature decreasing by 12 °C



- Hydraulic pipeline using 24° cone + O-ring double seal, high reliability



- Reinforced drive axle, more suitable for harsh working conditions



- A protective sleeve is added to the steering cylinder to reduce the external force damage of the cylinder



- A hydraulic oil cooler is added on 12ton main oil return circuit, reducing the hydraulic oil temperature and reducing the failure rate

- The 12-ton hydraulic oil tank side round flange is sealed with O-ring to prevent leakage

No.2 Safe and reliable

- Optional cabin with large operating space



- High-strength integral roof, rainproof and sun-proof, more suitable for outdoor operation



- Refueling structure combined gasket seal to prevent leakage



No.3 Comfortable driving

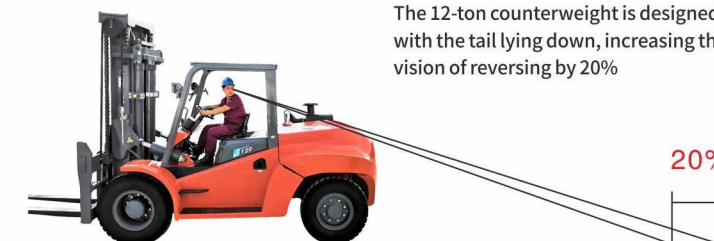
- Integral dashboard, beautiful and generous



- Ratchet-type parking brake for easy operation
- Three-layer parallel composite radiator, the heat dissipation effect is increased by 15%



- 12-ton heavy-duty structural wide-view mast



No.4 Easy maintenance

- Intelligent instrument, Live preview of vehicle operation information
- Balanced weight net for better protection



- Central integrated electrical control box, low failure rate and convenient maintenance



- Large-capacity fuel tank, longer working time for a single refueling

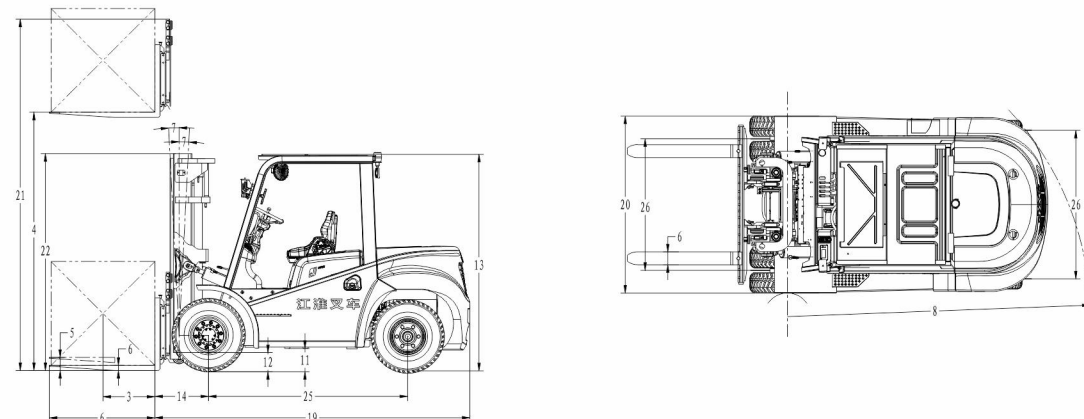
J Series Internal Combustion Counterbalanced Forklift Truck

SPECIFICATIONS

Model			FD50J	FD60J	FD70J	FD80J	FD100J	FD120J
1	Powe type		Diesel	Diesel	Diesel	Diesel	Diesel	Diesel
2	Rated load	kg	5000	6000	7000	8000	10000	12000
3	Load center distance	mm	600	600	600	600	600	600
4	Lift height	mm	3000	3000	3000	3000	3000	3000
5	Free lift height	mm	172	172	182	182	150	85
6	Fork size	L x W x T	1220 x 150 x 60	1220 x 150 x 60	1220 x 150 x 70	1220 x 150 x 80	1370 x 175 x 85	1820 x 175 x 85
7	Mast tilt angle	FR/RR	8/10	8/10	8/10	8/10	8/10	8/10
8	Minimum turning radius	mm	3580	3580	3580	3580	4280	4350
9	Minimum right angle stacking aisle width	mm	5490	5490	5500	5500	6307	8250
10	Minimum right angle aisle width	mm	3670	3670	3670	3670	4140	3877
11	Minimum ground clearance	Frame center(no load)	250	250	250	250	340	406
12		Mast Bottom (no load)	185	185	185	207	232	260
13	Height of overhead guard	mm	2500	2500	2500	2500	2600	2650
14	Overhang (FR)	mm	610	610	620	640	727	756
15	Maximum travel speed	Full load	22	22	22	22	20	26
		No load	25	25	25	25	24	28
16	Maximum lift speed	Full load	460	460	460	400	350	286
		No load	520	520	520	430	370	305
17	Maximum drawbar pull	KN	53	53	53	53	60	112
18	Maximum gradeability	%	30	28	22	20	20	20
19	Overall length	Without forks	3630	3630	3640	3640	4252	4528
20	Overall width	mm	2045	2045	2045	2045	2268	2350
21	Mast height at maximum lift (with backrest)	mm	4415	4415	4415	4415	4280	4655
22	Mast lowered height	mm	2510	2510	2510	2510	2845	3230
23	Tires	Front wheel	8.25-15-14PR	8.25-15-14PR	8.25-15-14PR	8.25-15-18PR	9.00-20-14PR	10.00-20-18PR
		Rear wheel	8.25-15-14PR	8.25-15-14PR	8.25-15-14PR	8.25-15-18PR	9.00-20-14PR	10.00-20-18PR
24	Wheelbase	mm	2300	2300	2300	2300	2800	2950
25	Tread	Front wheel/rear wheel	1520/1700	1520/1700	1520/1700	1520/1700	1600/1700	1674/1890
26	Self weight	Without load	8760	9530	9970	10300	13640	16000
27	Battery	Voltage/capacity	24/160					
28	Model		YC4A125-T300	YC4A125-T300	YC4A125-T300	YC4A125-T300	YC4A125-T300	CA6DF3/YCA07160-T300
29	Rated output	kw/r.p.m	92/2200	92/2200	92/2200	92/2200	92/2200	118/2200 /118/2200
30	Rated torque	Nm/r.p.m	480/1600-1800	480/1600-1800	480/1600-1800	480/1600-1800	480/1600-1800	640/1300-1700 /650/1300-1600
31	Bore x stroke	mm	108 x 132	108 x 132	108 x 132	108 x 132	108 x 132	110 x 125 /108 x 125
32	Number of cylinders		4	4	4	4	4	6
33	Displacement	L	4.837	4.837	4.837	4.837	4.837	7.12/6.87
34	Fuel tank capacity	L	200	200	200	200	200	215
35	Transmissions (FWD/RWD)		2/2 electro-hydraulic directional valve					
36	Operating pressure	Mpa	19.5					
37	Tire type (FR/RR)		Pneumatic					
38	Number of wheels (FR/RR)		4/2					
39	Lowering speed (full load)	mm/s	460	460	460	500	410	383
40	Lowering speed (no load)	mm/s	350	350	350	350	320	330
41	Axle load distribution (full load) (FR/RR)	kg	13870/2150		21400/2420			25175/2825
42	Axle load distribution (no load) (FR/RR)	kg	3990/5840		6160/7480			6435/9565

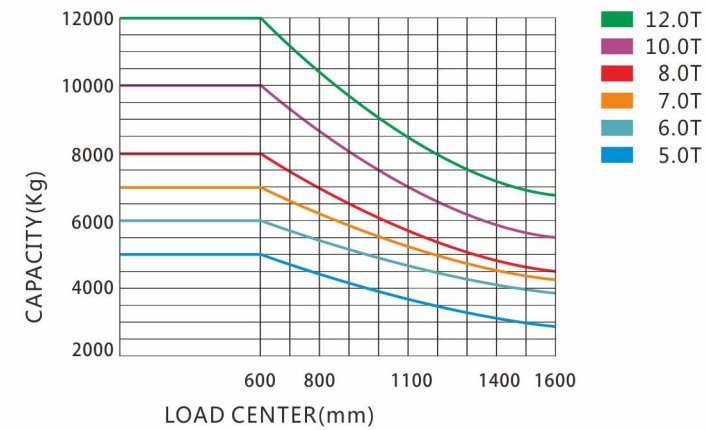
Calculation of minimum right angle stacking aisle width: Pallet size: 1100mm x 1100mm, [total clearance (FR/RR): 100 mm]

DIMENSIONAL DRAWING



J Series Internal Combustion Counterbalanced Forklift Truck

LOAD CAPACITY



Note: the vertical axis represents the CAPACITY and the horizontal axis represents the LOAD CENTER. The calculation of LOAD CENTER starts with the frontage of fork. The basic point of standard load refers to the center of a cube with load side 1000mm long. The CAPACITY will drop if the mast tilts forwards, a non-standard fork is adopted or the load width is excessive. The CAPACITY at the LOAD CENTER could be timely learnt of through the load curve.

STANDARD EQUIPMENT

- Torque converter dipstick
- Standard forks
- Standard seat
- Charging indication
- Backrest
- Backup light
- Back-up buzzer
- Side mirror
- Light switch
- Lamp bracket
- Electric horn
- 2-piece selector valve
- Engine choke
- Direction switch
- Combination taillight
- Rain cover of overhead guard
- Durable rib tire
- Hour meter
- neutral gear indication
- Air cleaner clogging alarm
- neutral gear indication
- Air cleaner clogging alarm
- Lift/tilt lever
- Lift circuit governor valve
- Drawbar pin
- Headlight
- Tilt adjustable steering wheel
- Tilt circuit self-locking valve
- Full hydraulic power steering
- Overhead air intake system
- Handle
- Hand brake switch
- Coolant temperature gauge
- Tool kit
- Overhead headlight
- Rubber pedal pad
- Battery
- Cyclone air cleaner
- Pointer type instrument cluster
- LCD instrument cluster
- Hydraulic return filter element
- Hydraulic suction filter element
- Hydraulic oil scale
- Oil pressure alarm
- Key switch
- Brake
- Turn signal light

OPTIONS EQUIPMENT

- Various attachments
- 2-3 stage full free mast
- Deluxe seat
- High exhaust
- Lengthened forks
- Lengthened fork cover
- Cab
- Cab heater
- Cab air condition
- Solid tire
- Double air filter
- Rotating beacon
- Small fan

ENGINE TYPE SELECTION AND PARAMETERS

NO.	Manufacturer	Power type	Model	Number of cylinders	Bore x stroke	Total displacement	Rated output/RPM	Rated torque/RPM	Emission standard	Applicable forklift truck						Remark
										CPGD50	CPGD60	CPGD70	CPGD80	CPGD100	CPGD120	
1	Xichai,China	Diesel	CA6DF3	6	110 x 125	7.12	118/2200	640/1300-1700	National Stage III							
2	Yuchai,China	Diesel	YC4A125-T300	4	108 x 132	4.837	92/2200	480/1400-1700	National Stage III							
3	Yuchai,China	Diesel	YC6J160-T300	6	105x125	6.494	118/2200	650/1400-1700	National Stage III							

SPECIFICATION TABLE OF FORKS

	Standard L x W x T	Length										Applicable forklift	Installation grade
		L											
		mm											
W mm	1220 x 150 x 60	*1220	1370	1520	1670	1820	1970	2120	2270	2420	2570	5-6t	IV
T mm		150	150	150	150	150	150	150	150	150	150		
W mm	1220 x 150 x 70	*1220	1370	1520	1670	1820	1970	2120	2270	2420	2570	7t	IV
T mm		150	150	150	150	150	150	150	150	150	150		
W mm	1220 x 150 x 80	*1220	1370	1520	1670	1820	1970	2120	2270	2420		8t	IV
T mm		150	150	150	150	150	150	150	150	150	150		
W mm	1370 x 175 x 85	1220	*1370	1520	1670	1820	1970	2120	2270	2420	2570	10t	V
T mm		175	175	175	175	175	175	175	175	175	175		
W mm	1520 x 175 x 85	1220	1370	1520	1670	*1820	1970	2120	2270	2420	2570	12t	
T mm		175	175	175	175	175	175	175	175	175	175		

Note: * is standard configuration

J Series Internal Combustion Counterbalanced Forklift Truck

2M WFOV BASIC MAST

Lift height	Load capacity						Overall height of mast																							
							Counterbalanced forklift truck						5-6t			7t			8t			10t			12t					
	5t	6t	7t	8t	10t	12t	Forks (on the ground)	Fully extended		Mast tilt	Forks (on the ground)	Fully extended		Mast tilt	Forks (on the ground)	Fully extended		Mast tilt	Forks (on the ground)	Fully extended		Mast tilt	Forks (on the ground)	Fully extended		Mast tilt				
	Dual tire	Dual tire	Dual tire	Dual tire	Dual tire	Dual tire	mm	With backrest	Without backrest	FR/RR	mm	With backrest	Without backrest	FR/RR	mm	With backrest	Without backrest	FR/RR	mm	With backrest	Without backrest	FR/RR	mm	With backrest	Without backrest	FR/RR				
mm	kg	kg	kg	kg	kg	kg	mm	mm	mm	°	mm	mm	mm	°	mm	mm	mm	°	mm	mm	mm	°	mm	mm	mm	°	mm	mm	mm	°
2300	5000	6000	7000	8000	—	—	2160	3650	3470	8/10	2160	3650	3470	8/10	—	—	—	—	—	—	—	—	—	—	—	—	—	—	—	—
2500	5000	6000	7000	8000	—	—	2260	3850	3670	8/10	2260	3850	3670	8/10	2260	3850	3670	8/10	2595	—	3805	8/10	—	—	—	—	—	—	—	—
2700	5000	6000	7000	8000	—	—	2360	4050	3870	8/10	2360	4050	3870	8/10	2360	4050	3870	8/10	2695	—	4005	8/10	—	—	—	—	—	—	—	—
3000	5000	6000	7000	8000	10000	12000	2510	4350	4170	8/10	2510	4350	4170	8/10	2510	4350	4170	8/10	2845	—	4305	8/10	3170	—	4665	8/10	—	—	—	—
3300	5000	6000	7000	8000	10000	12000	2660	4650	4470	8/10	2660	4650	4470	8/10	2660	4650	4470	8/10	2995	—	4605	8/10	3320	—	4965	8/10	—	—	—	—
3500	5000	6000	7000	8000	10000	12000	2760	4850	4670	8/10	2760	4850	4670	8/10	2760	4850	4670	8/10	3095	—	4805	8/10	3420	—	5165	8/10	—	—	—	—
3600	5000	6000	7000	8000	10000	—	2810	4950	4770	8/10	2810	4950	4770	8/10	2810	4950	4770	8/10	—	—	—	—	—	—	—	—	—	—	—	—
3700	5000	6000	7000	8000	—	12000	2860	5050	4870	8/10	2860	5050	4870	8/10	2860	5050	4870	8/10	3195	—	5005	8/10	3520	—	5365	8/10	—	—	—	—
4000	5000	6000	7000	8000	10000	12000	3060	5350	5170	8/10	3060	5350	5170	8/10	3060	5350	5170	8/10	3395	—	5305	8/10	3720	—	5715	8/10	—	—	—	—
4250	5000	6000	7000	8000	—	—	3185	5600	5420	8/10	3185	5600	5420	8/10	3185	5600	5420	8/10	3520	—	—	—	—	—	—	—	—	—	—	—
4500	5000	6000	7000	8000	10000	12000	3310	5850	5670	8/10	3310	5850	5670	8/10	3310	5850	5670	8/10	3645	—	5805	6/6	3845	—	6090	8/10	—	—	—	—
5000	5000	6000	7000	7750	10000	12000	3560	6350	6170	6/6	3560	6350	6170	6/6	—	—	—	—	3895	—	6305	6/6	4220	—	6715	8/10	—	—	—	—
5500	4750	5700	6750	7400	9000	10500	3860	6850	6670	3/6	3860	6850	6670	3/6	—	—	—	—	4195	—	6805	3/6	4520	—	7265	6/6	—	—	—	—
6000	4400	5400	6400	7000	8000	9500	4110	7350	7170	3/6	4110	7350	7170	3/6	—	—	—	—	4445	—	7305	3/6	4770	—	7765	3/6	—	—	—	—

BM 2-STAGE FULL FREE MAST

Lift height	Load capacity							Overall height of mast																	
								平衡重式叉车 Counterbalanced forklift truck							5-6t				7t				8t		
	Counterbalanced forklift truck				Mast tilt angle			Forks (on the ground)	Fully extended		Free		Mast tilt angle	Forks (on the ground)	Fully extended		Free		Mast tilt angle	Forks (on the ground)	Fully extended		Free		Mast tilt angle
	5t	6t	7t	8t	FR/RR	FR/RR	FR/RR		With backrest	Without backrest	With backrest	Without backrest			With backrest	Without backrest	With backrest	Without backrest			With backrest	Without backrest	With backrest	Without backrest	
mm	kg	kg	kg	kg	°	°	mm	mm	mm	mm	mm	°	mm	mm	mm	mm	mm	°	mm	mm	mm	mm	mm	mm	°
2300	5000	6000	7000	7800	—	—	2160	3650	3470	1145	1325	8/10	2160	3650	3470	1145	1325	8/10	2160	3715	3455	1145	1405	6/12	
2500	5000	6000	7000	7800	6/12	6/12	2260	3850	3670	1145	1325	8/10	2260	3850	3670	1145	1325	8/10	2260	3915	3655	1145	1405	6/12	
2700	5000	6000	7000	7800	6/12	6/12	2360	4050	3870	1145	1325	8/10	2360	4050	3870	1145	1325	8/10	2360	4115	3855	1145	1405	6/12	
3000	5000	6000	7000	7800	6/12	6/12	2510	4350	4170	1145	1325	8/10	2510	4350	4170	1145	1325	8/10	2510	4415	4155	1145	1405	6/12	
3300	5000	6000	7000	7800	6/12	6/12	2660	4650	4470	1295	1475	8/10	2660	4650	4470	1295	1475	8/10	2660	4715	4455	1295	1555	6/12	
3500	5000	6000	7000	7800	6/12	6/12	2760	4850	4670	1395	1575	8/10	2760	4850	4670	1395	1575	8/10	2760	4915	4655	1395	1655	6/12	
3600	5000	6000	7000	7800	6/12	6/12	2810	4950	4770	1445	1625	8/10	2810	4950	4770	1445	1625	8/10	2810	5015	4755	1445	1705	6/12	
3700	5000	6000	7000	7800	6/12	6/12	2860	5050	4870	1495	1675	8/10	2860	5050	4870	1495	1675	8/10	2860	5115	4855	1495	1755	6/12	
4000	5000	6000	7000	7800	6/12	6/12	3060	5350	5170	1645	1825	8/10	3010	5350	5170	1645	1825	8/10	3060	5415	5155	1645	1905	6/12	
4250	5000	6000	7000	7800	6/12	6/12	3185	5600	5420	1770	1950	8/10	3135	5600	5420	1770	1950	8/10	3185	5665	5405	1770	2030	6/12	
4500	5000	6000	7000	7800	6/12	6/12	3310	5850	5670	1895	2075	8/10	3260	5850	5670	1895	2075	8/10	3310	5915	5655	1895	2155	6/12	

CM 3-STAGE FULL FREE MAST

Lift height	Load capacity						Overall height of mast																		
							Counterbalanced forklift truck						5-6t					7t					8t		
	5t	6t	7t	8t	10t	12t	Forks (on the ground)	Fully extended		Free		Mast tilt angle	Forks (on the ground)	Fully extended		Free		Mast tilt angle	Forks (on the ground)	Fully extended		Free		Mast tilt angle	
	Dual tire	Dual tire	Dual tire	Dual tire	Dual tire	Dual tire		With backrest	Without backrest	With backrest	Without backrest			With backrest	Without backrest	With backrest	Without backrest			With backrest	Without backrest	With backrest	Without backrest		
mm	kg	kg	kg	kg	kg	kg	mm	mm	mm	mm	mm	°	mm	mm	mm	mm	mm	°	mm	mm	mm	mm	mm	mm	°
3000	—	—	—	—	—	—	2140	4330	4150	800	980	8/10	2140	4330	4150	800	980	8/10	2140	4220	4030	770	960	6/12	
3300	4500	5600	6500	7000	—	—	2240	4930	4750	900	1080	8/10	2240	4930	4750	900	1080	8/10	2240	4520	4330	870	1060	6/12	
3600	4500	5600	6500	7000	8000	—	2340	4930	4750	1000	1180	8/10	2340	4930	4750	1000	1180	8/10	2340	4820	4630	970	1160	6/12	
4000	4500	5600	6500	7000	8000	—	2475	5330	5150	1135	1315	6/6	2475	5330	5150	1135	1315	6/6	2475	5220	5030	1105	1295	6/6	
4350	4500	5600	6500	7000	8000	—	2590	5680	5500	1250	1430	6/6	2590	5680	5500	1250	1430	6/6	2590	5570	5380	1220	1410	6/6	
4500	4500	5600	6500	7000	8000	—	2640	5830	5650	1300	1480	6/6	2640	5830	5650	1300	1480	6/6	2640	5720	5530	1270	1460	3/6	
4800	4500	5600	6500	7000	7500	—	2740	6130	5950	1370	1550	6/6	2740	6130	5950	1370	1550	6/6	2740	6020	5830	1370	1560	3/6	
5000	4500	5600	6500	7000	7500	—	2805	6330	6150	1435	1615	6/6	2805	6330	6150	1435	1615	6/6	2805	6220	6030	1435	1625	3/6	
5500	4200	5300	6100	6600	7000	—	2970	6830	6650	1600	1780	3/6	2970	6830	6650	1600	1780	3/6	2970	6720	6530	1600	1790	3/6	
6000	4000	5000	5000	6000	6000	—	3185	7330	7150	1765	1945	3/6	3185	7330	7150	1765	1945	3/6	3185	7220	7030	1765	1955	3/6	
6500	3800	4500	4500	5500	6000	—	—	—	—	—	—	—	—	—	—	—	—	—	3450	7720	7530	1930	2120	3/6	
7000	3500	4000	4250	4500	5000	—	—	—	—	—	—	—	—	—	—	—	—	—	3715	8220	8030	2095	2285	3/6	